



MARITIME & COMMERCIAL LAWYERS

Your First Port Of Call In Malaysia

ABOUT US

Joseph & Partners is widely recognized as the leading maritime and commercial law firm in Malaysia. The firm has been accredited and endorsed by the Legal 500, Chambers & Partners (Band 1) and has also won the Malaysia Law Awards in 2014-2016 for outstanding performance.

Our lawyers have a deep understanding of how the market works across dry and wet shipping, cargo claims, admiralty processes, marine casualties, arbitration, marine offshore-related contracts and transactions and insurance disputes. We represent the full spectrum of those involved in the shipping industry, including ship-owners and charterers, P&I Clubs, banks, international agencies, shipyards, marine insurance underwriters, governments and brokers.

Based in Kuala Lumpur and Johor Bahru, Joseph & Partners has dedicated focus on the shipping, insurance, marine offshore, trade, logistics and corporate and commercial sector. With several years of experience at a leading international maritime law firm, there is little that our founders have not already seen and done. Our mission is to provide our clients with practical legal advice at a competitive price. Our firm also has extensive experience in dealing out litigation as well as arbitration in Malaysia.

We ensure you get the insight you need to solve your problem wherever it comes up. First, we think about the commercial solution, and then substantiate our advice with a solid foundation of legal expertise.

OUR SERVICES

Our expertise includes:

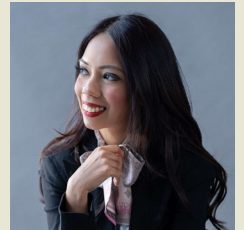
- Admiralty & Casualty
- Commercial Shipping
- Corporate
- Insurance and Reinsurance
- International Trade
- Offshore
- Shipbuilding
- Shipping Finance
- Shipping Litigation
- Yachts

This list is by no means exhaustive; to find out how we can help you, please contact us.

OUR TEAM



Jeremy M Joseph
Managing Partner
E-mail : jeremy@jnplaw.my
M : +6012 3955 594



Melanie M Pillai
Partner
E-mail : melanie@jnplaw.my
M : +6012 294 9604



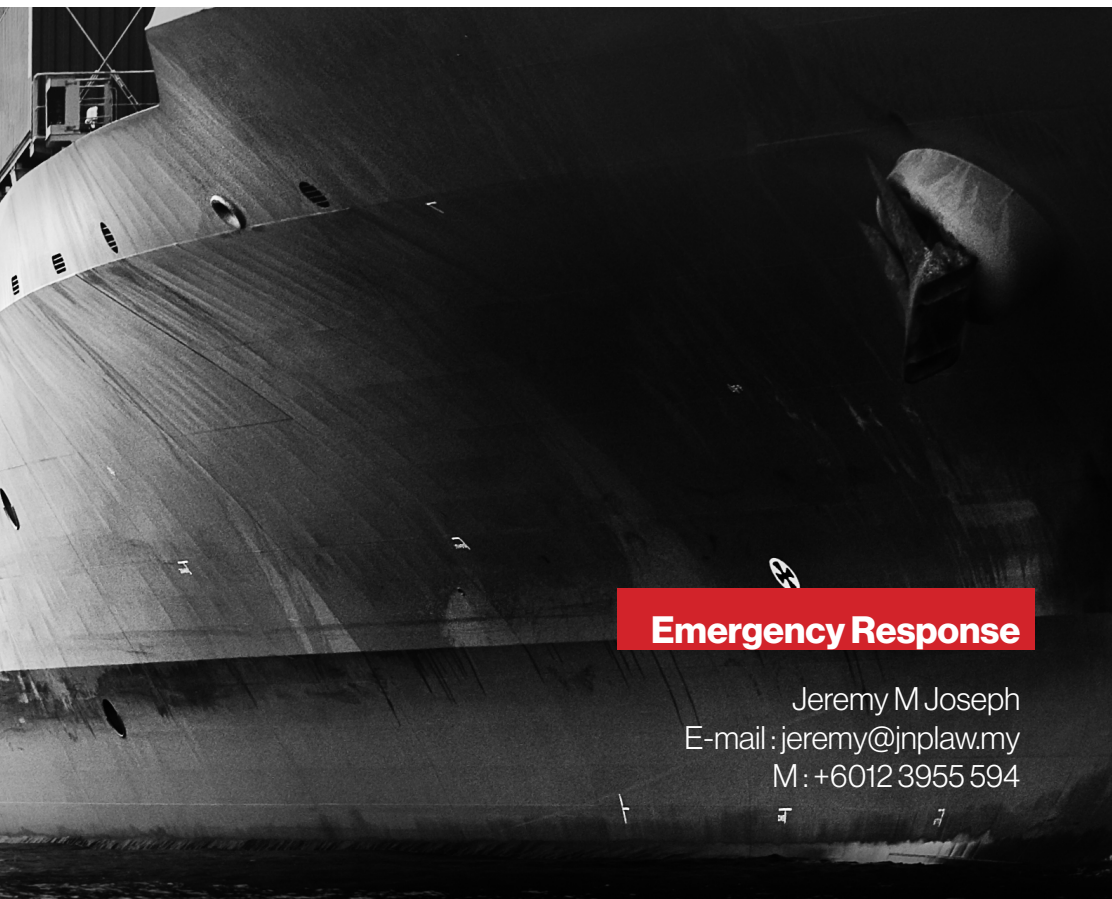
Vinodhini B Samuel
Partner
E-mail : vino@jnplaw.my
M : +6017 401 7877



Matthew J Van Huizen
Senior Associate
E-mail : matthew@jnplaw.my
M : +6014 736 0649



Joseph George
Senior Associate
E-mail : george@jnplaw.my
M : +6017 855 5622



Emergency Response

Jeremy M Joseph
E-mail : jeremy@jnplaw.my
M : +6012 3955 594



Joseph & Partners (Kuala Lumpur Office)

Suite J-7-2 & J-7-3

Solaris Mont Kiara, Jalan Solaris, 50480 Kuala Lumpur, Malaysia

T: +603 6203 7877 | F: +603 6203 7876

Joseph & Partners (Johor Bahru Office)

Suite 09-06, Menara JLand

Jalan Tun Abdul Razak, 80000 Johor Bahru

Johor Darul Ta'zim, Malaysia

T: +607 220 0356 | F: +607 207 1832